



Blue-footed Booby © Shutterstock



Onshore seal encounter with the Coral I & II in the background © Klein Tours

## DARWIN'S GALAPAGOS

8 days/7 nights<sup>^</sup>

From \$5870 per person twin share

Departs ex Baltra or San Cristobal

**E**xplore the miraculous world of the Galapagos aboard one of three expedition ships, the Coral I, Coral II or the Galapagos Legend. Cruise amongst the islands, dropping anchor in quiet inlets to visit beaches crowded with birds, sea lions and iguanas, swim with sea turtles, walk through colonies of Great Frigatebirds and visit a tortoise breeding centre. These cruises are a fantastic way to explore the diversity of the Galapagos.

Price per person from:*	Twin
<b>Galapagos Legend</b>	\$6041
(Departs Mon & Thu)	
<b>Coral I/Coral II</b>	\$5870
(Departs Sun & Wed)	

\*Based on two people sharing, singles on request.

**4, 5, 11 & 15 day cruise options available.**

Airfares ex Quito or Guayaquil available on request.

Child rates on request.

### INCLUSIONS

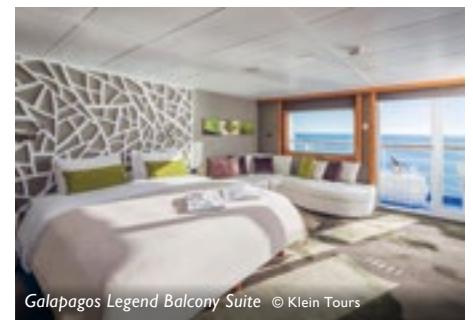
Transfers between airport and boat, all meals onboard, accommodation, excursions to islands conducted by naturalist guides, use of snorkelling equipment, Galapagos Park Fee and Immigration Control Card.

### EXCLUSIONS

Flights, wetsuits, bar and gratuities.



Coral Junior Cabin © Klein Tours



Galapagos Legend Balcony Suite © Klein Tours

### CORAL I

Coral I is a comfortable 36 passenger, first class vessel with 18 spacious outward-facing cabins. Spread across three decks, all feature air-conditioning, television, and private bathrooms – while some have the ability to connect making them ideal for families. Onboard facilities include a dining room, library, boutique, Jacuzzi, barbecue area and observatory. Every voyage is accompanied by 3 naturalists and 11 crew ensuring high levels of service throughout your journey.

### CORAL II

Similar in style to its twin sister but much more intimate in atmosphere, the superb Coral II accommodates a maximum of 20 passengers in 11 cabins. All are equipped with air conditioning and private bathrooms. There are also spacious lounge and dining areas spread across this four-level vessel, with a whirlpool and a sun terrace on the top deck. Guests are looked after by a friendly 9-person crew and 2 bilingual naturalists who lead snorkel, kayak and walking excursions throughout the expedition.



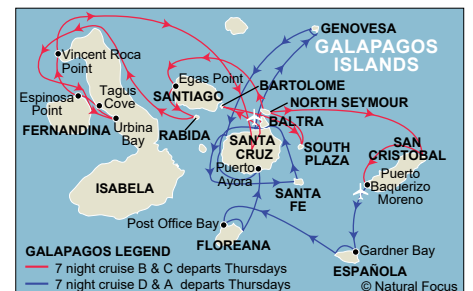
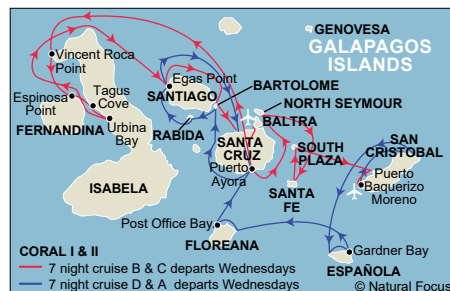
Galapagos Legend © Klein Tours

### GALAPAGOS LEGEND

The 91m Galapagos Legend has all the facilities of a cruise liner, yet it is still small enough to guarantee intimacy of the experience. Recently renovated, it can accommodate a maximum of 100 passengers in comfortable, air-conditioned rooms (52 outside and 3 inside) featuring 18 luxurious balcony suites, all with private ensuite facilities. Other features include observation decks, al fresco dining areas, spacious lounge, bar, library, kids' corner, fitness centre and an onboard swimming pool.



Snorkel with Galapagos sea turtles © Klein Tours



Itinerary maps intended as a guide only. Shorter and longer cruise options are available. Please contact us for more information.