



VICTORIA FALLS

Victoria Falls lies on the Zambezi River which forms the border between Zambia and Zimbabwe. Whilst neither the highest nor widest waterfall in the world, Victoria Falls' combined height and width makes it the planet's largest single sheet of falling water.

The wet season in Zambia/Zimbabwe falls between late Nov and early May. The volume of water falling is highest between Feb and May, peaking in Apr. The falls look most dramatic at peak flow; however, the amount of spray can obscure the view. Nov generally has the lowest water levels.

Victoria Falls - "The Smoke That Thunders" © Shutterstock

VICTORIA FALLS

3 days/2 nights

From \$577 per person twin share

Departs daily ex Victoria Falls

Tour cost per person from:	Twin	Single
The Elephant Camp [#]	\$1400	\$1400
Old Drift Lodge [#]	\$1400	\$1400
Vic Falls Safari Club (Club Rm)	\$965	\$965
Victoria Falls Hotel (Dlx Rm)	\$925	\$1603
(Std Rm)	\$829	\$1401
Ilala Lodge (Deluxe Rm)	\$891	\$1207
Vic Falls Safari Lodge (Lodge Std Rm)	\$767	\$767
The Kingdom (Std Rm)	\$577	\$867

[#]Full board basis.

INCLUSIONS

Scheduled airport/hotel transfers, hotel accommodation on a B&B basis (except Elephant Camp & Old Drift Lodge full board including local drinks) and scheduled tour of the Victoria Falls. Children of all ages welcome at all hotels except Victoria Falls Safari Club: Children 10+ and Elephant Camp & Old Drift Lodge 7+.

FOR OPTIONAL VICTORIA FALLS EXCURSIONS PLEASE SEE P84.

Victoria Falls is often considered one of the seven natural wonders of the world. In 1855, from an island close to the edge of precipice that was later named after him, explorer Dr. Livingstone described the waterfall as "forming scenes so lovely they must have been gazed upon by angels in flight." Named in honour of Queen Victoria, the falls' official name, Mosi-oa-Tunya – "The Smoke That Thunders" – is commonly used as well. Columns of spray can be seen from miles away as 546 million cubic metres of water per minute plummet into a deep gorge over 100 metres below.

Day 1 Victoria Falls

Transfer from Victoria Falls Airport to your hotel for overnight.

Day 2 Victoria Falls

Morning tour of Victoria Falls (not incl. at Elephant Camp). The afternoon is at leisure, or you can take some optional tours including the Flight of Angels by Helicopter, a Sunset Cruise on the Zambezi River or Lunch on Livingstone Island (see p84).

Day 3 Tour ends

Transfer to Victoria Falls Airport. Tour ends.



Aerial view of the falls © govictoriafalls



You might get wet! © Wilderness Safaris



Resident herd of elephants at Elephant Camp © David Rogers



Main guest area with fire pit © Wild Horizons

THE ELEPHANT CAMP

Enjoy sundowners from the comfort of your private deck as a family of habituated elephants forage nearby. The Elephant Camp Main offers 12 luxury tents with personal plunge pools, indoor/outdoor showers and distant views of Victoria Falls. For extra exclusivity and seclusion, there are 4 additional tented suites located in a wing known as The Elephant Camp West, which operates independently from the main camp.



Luxurious Elephant Camp Suite © Elephant Camp



Room with a view © Wild Horizons



Victoria Falls Hotel © African Sun

VICTORIA FALLS HOTEL

Set amongst century-old shade trees and tropical gardens, this gracious, old-world hotel offers Edwardian grandeur and excellent service. The 161 air-conditioned guestrooms and suites have all recently been beautifully refurbished and offer every modern convenience. Deluxe suites have a view of Batoka Gorge and the spray of the falls. Facilities include three restaurants, a bar, library, reading room and 24-hour room service. Afternoon tea is served on the Stanley Terrace overlooking the Victoria Falls Bridge that links Zimbabwe to Zambia and a 10-minute stroll along the hotel's private pathway leads to the falls.



Victoria Falls Hotel honeymoon suite © African Sun



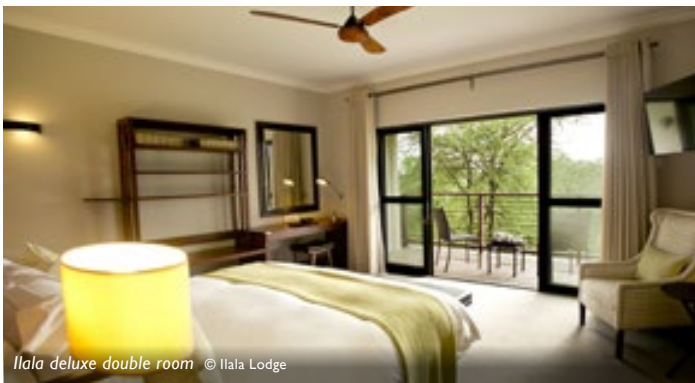
Victoria Falls Hotel High Tea © African Sun



Ilala Lodge © Ilala Lodge

ILALA LODGE

The closest hotel to Victoria Falls, family-run Ilala Lodge offers 73 appealing, private guestrooms spread across two wings. Facilities at this convenient, upscale property include a pool, bar and an award-winning restaurant where the spray of the nearby waterfall can often be seen. The Victoria Falls National Park shares a border with the property, and wild animals such as warthog and impala often graze the hotel's manicured lawns.



Ilala deluxe double room © Ilala Lodge



The Kingdom © The Kingdom

THE KINGDOM

This 4 star resort hotel has a total of 294 tasteful, air-conditioned rooms with picturesque lake views and is located just a few minutes' walk from famous waterfall. The Kingdom's stunning architecture is inspired by the ancient Shona Kingdom of Munhumutapa, with towering pillars and many water features. Inside it, the "Great Enclosure" houses several restaurants, bars, a casino and three swimming pools.



The Kingdom standard room © The Kingdom



Victoria Falls Safari Lodge © VFSL

VICTORIA FALLS SAFARI LODGE & CLUB

The award-winning Victoria Falls Safari Lodge is set on a plateau with panoramic views over the Zambezi National Park and a private waterhole attracting herds of buffalo, elephant, giraffe, zebra, as well as night-time predators, such as lion and leopard. It features 72 contemporary guestrooms built from natural materials such as timber and thatch, with private sunset-facing balconies. For families and small groups, there are standalone two and three-bedroom suites which have access to all lodge facilities.

The premium Victoria Falls Safari Club is situated on the grounds of the Victoria Falls Safari Lodge, also overlooking the private waterhole. The Club features 20 luxurious, air-conditioned rooms and suites, with stunning bush views, private balconies, large ensuite bathrooms, minibars and espresso machines. The Club has a range of amenities exclusive to guests, plus all Club guests also enjoy access to the facilities of the Safari Lodge.



Victoria Falls Safari Club © VFSL

THE SMOKE THAT THUNDERS!

3 days/2 nights

From \$711 per person twin share

Departs daily ex Livingstone

Tour cost per person from:	Twin	Single
Tongabezi Lodge (FB & Activities)	\$2092	\$2218
Toka Leya Camp (FB & Activities)	\$1840	\$2466
Sanctuary Sussi & Chuma (FB & Activities)	\$1788	\$1788
Thortree River Lodge (FB & Activities)	\$1706	\$1706
Sindabezi Island (FB & Activities)	\$1688	\$1814
Anantara Royal Livingstone (B&B)	\$1339	\$2489
AVANI Victoria Falls Resort (B&B)	\$711	\$1303

INCLUSIONS

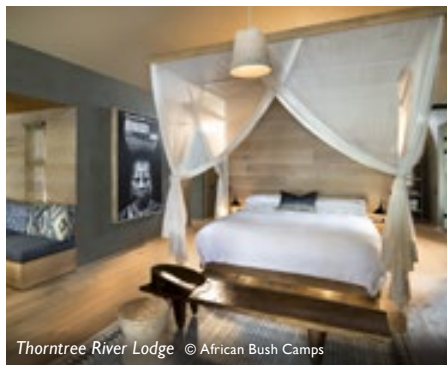
Return airport/hotel transfers, 2 nights accommodation in lead-in room and Tour of the Falls. Meals and further activities as indicated above: Anantara Royal Livingstone and AVANI Victoria Falls Resort B&B only, all other properties include full board, laundry, local drinks and the following activities: game drive in Mosi-oa-Tunya National Park, a village visit and a cruise on the Zambezi.

FOR OPTIONAL VICTORIA FALLS EXCURSIONS PLEASE SEE P84.

Zambia is where you'll find historic Livingstone Island and the "Devil's Pool", a natural basin mere metres from where the Zambezi River plunges over the edge into First Gorge. This side of the falls offers romantic riverside accommodation, exceptionally close views of Victoria Falls and access to the lush Mosi-oa-Tunya National Park.



The Royal Livingstone © Sun International



Thortree River Lodge © African Bush Camps



Tongabezi Lodge © Tongabezi

THORTREE RIVER LODGE

This fabulous lodge blends contemporary style and environmentally-conscious design with authentic African architectural elements. There are 12 gorgeous rooms (including 2 family units), each fitted with a private plunge pool. Gourmet meals are served in the main lodge with features a sunken 'boma' and infinity pool. Floating decks at the water's edge connect the river to land. Children welcome.

TONGABEZI & SINDABEZI ISLAND

Just 20 minutes from Livingstone on the banks of the Zambezi is the exclusive Tongabezi Lodge, with 5 spacious riverside cottages, and 6 completely individual holiday houses. Located on a private island in the Zambezi River, luxurious and romantic Sindabezi Island accommodates just 10 guests in 5 open-sided chalets. Children: Tongabezi 7+ and Sindabezi 14+.



Toka Leya © Wilderness Safaris



Sanctuary Sussi & Chuma © Sanctuary Retreats



AVANI Victoria Falls Resort © AVANI

TOKA LEYA

Situated 12km upriver from Victoria Falls, peaceful Toka Leya comprises of 12 classic safari-style tents connected to the main lodge by wooden walkways. All guest tents are ensuite and feature four-poster beds and fantastic views over the Zambezi. Children 6+. Families with children under 12 are required to pay for private activities.

SANCTUARY SUSSI & CHUMA

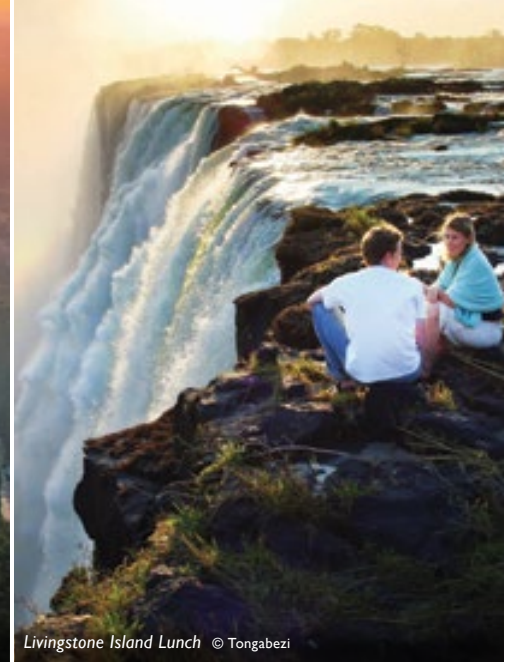
Built on a dramatic bend in the Zambezi River, Sanctuary Sussi & Chuma is named after two of Dr Livingstone's most faithful friends. Guests at this stunning camp stay in 12 treehouses or 2 private two-bedroom villas. This is the only lodge in the area where walking safaris are offered, supplementing game drives, canoeing and of course, a tour of the nearby falls. Children 6+.

AVANI VICTORIA FALLS & ANANTARA ROYAL LIVINGSTONE

The AVANI is a very popular 212-room family-oriented resort located very close to the falls. Sharing a driveway, the Anantara is of an entirely different character – a 5-star hotel redolent of colonial days gone by, with 173 elegant rooms. Both properties have a pool and onsite restaurants. Children of all ages welcome.



Flight of Angels over Victoria Falls © African Sun



Livingstone Island Lunch © Tongabezi

VICTORIA FALLS OPTIONAL EXCURSIONS

12-13 minutes to 1 day

Departs Vic Falls or Livingstone daily

Tour cost per person (Min 2):	Zim	Zambia
Flight of Angels by Helicopter [^]	\$253	\$331
Sunset Cruise by Ra-Ikane riverboat	\$133	\$237
White Water Rafting: ^Ω		
Low water run full day Aug-Dec (approx) [#]	\$255	\$308
High water run full day Feb-Jun (approx)	\$238	\$330
Livingstone Island Lunch	–	\$415
Chobe NP Safari Full Day Tour	\$309	\$331
Wildlife Conservation & Awareness Safari*	\$276	–

[^] Approx USD\$12-\$22 park fees to be paid locally.

^Ω White Water Rafting does not operate from approximately Apr to Jun due to water levels. Min 4 ex Zambia. No minimum ex Zimbabwe.

[#] Half day tour ex Zambia. Full day ex Zimbabwe.

* USD\$15 park fees to be paid locally per person. USD\$75 donation for the VFAPU included.

INCLUSIONS

Small handling fee by AWS, transfers to/from town hotel for your optional excursion.



Chobe National Park safari experience © Shutterstock



Wildlife conservation safari © Marcus Visic



Flight of the Angels © govictoriafalls

FLIGHT OF ANGELS

This exciting 12-13 minute joyride over the roaring falls and rushing Zambezi River will leave you breathless. It's a wonderful way to fully appreciate the incredible size of the falls, and the awesome power of the water as it carves solid rock into zig-zagging gorges. Flights by microlight aircraft are also available. Contact us for details.



White Water Rafting © Mike Myers

WHITE WATER RAFTING

This 22km run down the rapids of the Zambezi River forms the world's best one-day white water rafting experience. Although graded 5, the rapids are accessible by anyone who is reasonably fit. The rafts used are top quality and you are guided by a qualified oarsman, so no experience is necessary. You must however, be able to swim. Min age: 15yrs.

CHOBE NATIONAL PARK

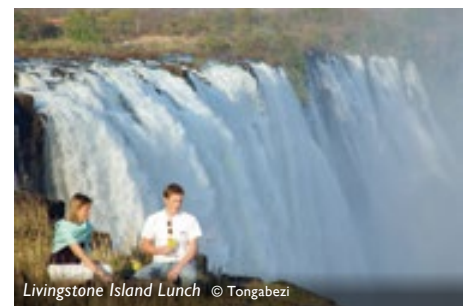
Established in the 1930s, this was Botswana's first reserve and today, is famous for its large healthy herds of elephant and buffalo. Occupying 11,700km², Chobe is rated as one of the best wildlife and conservation areas in all of southern Africa. A full day here includes a classic boat safari and a game drive by open vehicle to spot the park's prolific bird and wildlife. Includes lunch.



Ra-Ikane Zambezi Cruise © Ilala Lodge

SUNSET CRUISE (EX VIC FALLS)

The graceful Ra-Ikane riverboat is the perfect setting for refreshing cocktails as the sun slips below the horizon. Named in honour of the guide who led David Livingstone to the famous waterfall, the boat features fine teak panels, brass fittings, club chairs and a fully stocked bar (drinks and snacks included).



Livingstone Island Lunch © Tongabezi

LIVINGSTONE ISLAND LUNCH

Livingstone Island sits at the lip of the cliff over which the Zambezi River tumbles forming Victoria Falls, and is the place where Dr. Livingstone had his first glimpse of the falls. Only accessible during the low water season, and with only a limited number of visitors allowed each day, lunch on the island is an exclusive and very scenic experience.

WILDLIFE CONSERVATION AND AWARENESS SAFARI

This hands-on, half day safari run by Charles Brightman of the Victoria Falls Anti Poaching Unit (VFAPU) offers a behind-the-scenes look at wildlife conservation. Start at 0630 with a field trip into the Zambezi National Park to help record game sightings, identify spoor, sweep for wire snares, etc. Part of the tour cost goes directly to support the VFAPU (see page 11).