

NAMIBIA

Namibia is a land of deserts, with the Kalahari to the east and the ancient Namib in the west. Gameviewing is best here in the dry season (May-Oct) with the country's national parks harbouring a surprising variety of wildlife. Animal numbers may not compare to countries such as Botswana, especially in desert areas, but there are many rare and interesting species to be found. Culturally, Namibia is very diverse, with visitors able to interact with indigenous tribes such as the nomadic Himba. Driving is the most popular mode of transport between deserts, dunes and oases, but scheduled light aircraft transfers reduce travelling time and afford the best views of Namibia's timeless landscapes.



Namibia's spectacular scenery © Dana Allen

WINGS OVER NAMIBIA

7 days/6 nights

From \$7766 per person twin share**^

Departs daily ex Windhoek airport

*Price based on two people sharing, singles on request.

^Based on specific flight times. Camp choice is subject to availability at time of booking.

INCLUSIONS

Scheduled flights Windhoek/Geluk/Swakopmund/Doro Nawas/Damaraland/Doro Nawas/Ongava/Windhoek, full board accommodation, all local drinks (except premium and imported brands), laundry service, park fees and lodge activities. Luggage limit 20kgs.

Guests with children between 6-12 require a private vehicle & guide (additional cost).

Discover the breathtaking beauty of the Namib Desert from the air with this flying safari. Designed to offer you some of the best camps and wilderness areas in the country, this safari will take you on an unforgettable African journey.



Exploring the Sossusvlei sand dunes © Shutterstock

Days 1/2 Sossusvlei

Depart Windhoek by light aircraft to Sossusvlei and transfer to Kulala Desert Lodge, located in the Kulala Wilderness Reserve. This lodge offers magnificent views of the famous dunes, surrounding mountains and vast open plains. Each room has a veranda and rooftop terrace where you can sleep out under the stars. During your stay, travel to Sossusvlei, home of the highest sand dunes in the world, with some up to 300m high!

Days 3/4 Damaraland

Depart on a breathtaking flight over Sossusvlei and along the Skeleton Coast where dunes and desert meet the tumultuous waters of the Atlantic Ocean. Continue inland to Damaraland Camp, situated in the Huab River Valley or to Desert Rhino Camp, known for the largest free roaming black rhino population in Africa. Game drives by 4WD in search of rare endangered desert elephant and black rhino are a highlight.

Days 5/6 Ongava

Depart Damaraland for the Ongava Game Reserve bordering famous Etosha NP. Daily game drives and walking trails (with armed guide) are offered within the reserve, as well as excursions into Etosha National Park. Accommodation will be at the intimate Ongava Tented Camp or Ongava Lodge (p69).

Day 7 Safari ends Windhoek

Travel by light aircraft to Windhoek.



Rhino viewing on foot, Damaraland © Wilderness Safaris



Busy waterhole - Etosha National Park © Mike Myers

NAMIBIA FLY-IN LODGES

4 days/3 nights

Departs daily ex Windhoek

Extra nights available at all camps

Experience the sheer expanse of Namibia's stunning landscapes and make the most of your precious time by flying into some of southern Africa's remotest lodges, three of which we've featured here. These properties are set in completely different environments, showcasing the country's diverse scenery. Be awed by austere deserts with towering dunes, ghostly salt pans inhabited by desert-adapted animals and vast acacia-dotted plains. If you want to explore Namibia but only have limited time, a combination of two or more of these fly-in lodges makes for a perfect safari.



Little Ongava

ONGAVA

4 days/3 nights from \$4968 per person twin share*

Situated in a private reserve near the eastern entrance to Etosha National Park, the Ongava properties provide visitors the opportunity to view both black and white rhinos, and other big game. Choose from **Little Ongava**, whose 3 exclusive suites boast private plunge pools; **Ongava Lodge**, which has 14 comfortable thatched chalets; and **Ongava Tented Camp**, which features 8 classic Meru-style tents fitted with outdoor showers.

Price per person from:*	Twin
Ongava Lodge & Tented Camp	\$4968
Little Ongava	\$6762

INCLUSIONS

Air transfer from Windhoek to Ongava return, accommodation, all food and drinks (excluding premium and imported drinks), laundry service, park fees & activities. Minimum age restriction of 6 years. Guests with children 6-12 must book private activities at an additional cost (on request). Age restrictions for some activities.

*Prices based on two people sharing, singles on request.



Hoanib Skeleton Coast Camp

HOANIB SKELETON COAST CAMP

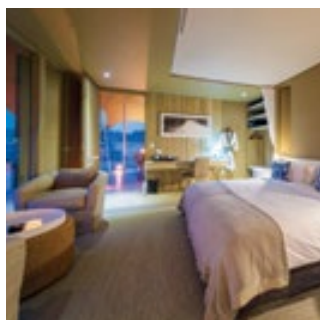
4 days/3 nights from \$6623 per person twin share*

This remote Namib Desert camp is located in a rugged valley that slopes down into the consistently dry Hoanib River. Its indulgent swimming pool, lounge and 8 stunning guest suites (including 1 family unit) are luxurious oases. Game drives here often reveal desert-adapted animals such as lion and elephant, with the camp's research centre providing deeper insight into these amazing creatures.

INCLUSIONS

Air transfer from Windhoek to Hoanib return, accommodation, all food and drinks (excluding premium and imported drinks), laundry service, park fees & activities. For stays of 3 nights or more a full day fly-in excursion to the Skeleton Coast is included (weather dependent). Minimum age 6 years. Guests with children 6-12 must book private activities at an additional cost (on request). Age restrictions for some activities.

*Price based on two people sharing, singles on request.



Serra Cafema interior © Wilderness Safaris (artist's impression)

SERRA CAFEMA

4 days/3 nights from \$7001 per person twin share*

Nestled in the dramatic Serra Cafema mountain range north of the Namib Desert, this newly built camp offers premium accommodation in one of the most isolated locations in southern Africa. Overlooking the life-giving Kunene River, Serra Cafema has 8 elegant thatched chalets, a communal dining room and bar. Highlights include respectful interactions with local semi-nomadic Himba people, nature walks, quad biking and boating (if water levels permit).

INCLUSIONS

Air transfer from Windhoek to Serra Cafema return, accommodation, all food and drinks (excluding premium and imported drinks), laundry service, park fees & activities. Minimum age restriction of 6 years. Guests with children 6-12 must book private activities at an additional cost (on request). Age restrictions for some activities.

*Price based on two people sharing, singles on request.





Dead Vlei clay pan, Sossusvlei © David Kneale

ULTIMATE NAMIBIA SAFARI

10 days/9 nights

From \$5005 per person twin share*^

Departs ex Windhoek

Departs ex Windhoek: 12 Feb, 19, 26 Mar, 02, 09, 16, 23, 30 Apr, 07, 14, 21, 28 May, 04, 11, 18, 25 Jun, 02, 09, 16, 23, 30 Jul, 06, 13, 20, 27 Aug, 03, 10, 17, 24 Sep, 01, 08, 15, 22, 29 Oct, 05, 12, 19, 26 Nov, 17, 24 Dec

*Price based on two people sharing, singles on request.

^Maximum 7 clients.

INCLUSIONS

Accommodation as per the itinerary, transportation in a luxury air-conditioned safari vehicle, all meals, services of a registered and experienced naturalist English-speaking safari guide, entrance fees and excursions as per the itinerary, mineral water on board the safari vehicle. Luggage limit 20kg.

No children under 12.

Travelling by road to some of the country's most renowned scenic and wildlife locations, this small group tour offers a very personal journey through Namibia. Staying in very comfortable lodges and tented camps, the Ultimate Namibia Safari is accompanied by a professional and experienced naturalist guide. Highlights include the world's highest sand dunes at Sossusvlei, sea kayaking with seals and dolphins on the Skeleton Coast, tracking desert-adapted elephants and wildlife viewing in the famous Etosha National Park. The safari

also includes a visit to the UNESCO World Heritage Site at Twyfelfontein and a special encounter with the semi nomadic Himba people.

Days 1/2 Sossusvlei

Depart Windhoek early morning by road for Sossusvlei arriving at Sossus Dune Lodge mid afternoon. Time permitting, visit nearby Sesriem Canyon or explore Elim Dune. On Day 2 enjoy a sunrise tour of the magnificent sand dunes before returning to the lodge for lunch. Afternoon at leisure. LD/BLD



Flock of flamingos, Walvis Bay © Shutterstock

Days 3/4 Swakopmund

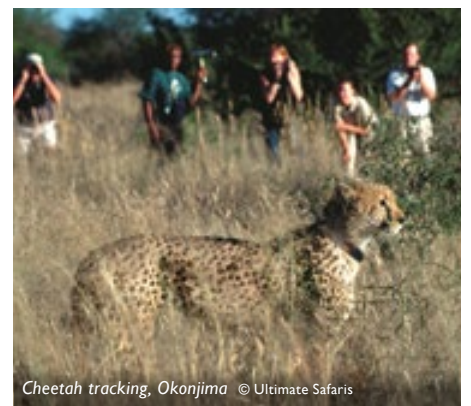
Travel by road northwest through desert landscapes (picnic lunch en route) to reach the coastal town of Swakopmund. On Day 4 visit Walvis Bay for a kayaking or motorboat excursion with a chance of viewing Cape fur seals, dolphins and a variety of sea birds. Explore Walvis Bay township before returning to Swakopmund. Overnight guesthouse. BLD

Days 5/6 Damaraland

Drive through a vast landscape of magnificent mountains, rock formations and unique vegetation to Damaraland. Visit the prehistoric Twyfelfontein rock engravings, the Organ Pipes geological site and enjoy a game drive in search of the unique desert adapted elephant. Overnight at Camp Kipwe. BLD



Camp Kipwe, Damaraland © Ultimate Safaris



Cheetah tracking, Okonjima © Ultimate Safaris

Day 7 Etosha National Park

Early morning departure for Etosha National Park. Along the way visit a local Himba settlement to gain an insight into their customs and traditions. Late afternoon arrival at Etosha Mountain Lodge. BLD

Days 8/9 Etosha National Park

Enjoy a full day of gameviewing in Etosha National Park. On Day 9 morning game drive inside Etosha, and an afternoon game drive on the private Onguma Game Reserve. Accommodation at Onguma Tree Top Camp. BLD

Day 10 Tour ends Windhoek

Early departure for the AfriCat Day Centre wildlife sanctuary in Okonjima before returning to Windhoek where the safari ends. BL



A lion bathing in the light of a sunset, Etosha National Park © Shutterstock



Herd of elephant in Damaraland © Wilderness Safaris



WHY TRAVEL WITH ULTIMATE SAFARIS?

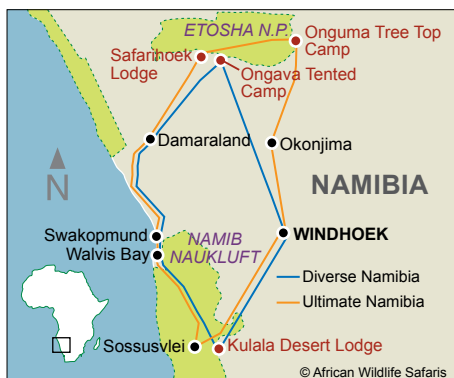
EXCEPTIONAL GUIDES

With their in-depth local knowledge, an Ultimate Safaris guide can turn an ordinary safari into a life-changing journey. Native Namibians, these trained naturalists are welcomed as friends wherever they go, ensuring an authentic travel experience.



QUALITY VEHICLES

Ultimate Safaris' air-conditioned Land Cruisers take 7 passengers maximum, guaranteeing everyone a window seat. Pop-up rooftops allow for better photography and gameviewing, whilst there is a convenient onboard fridge and device charging point.



DIVERSE NAMIBIA

10 days/9 nights

From \$5672 per person twin share*^

Departs ex Windhoek

Departs ex Windhoek: 20 Jan, 01, 10 Feb, 06, 21, 28 Mar, 02, 15, 18 Apr, 08, 11, 23 May, 04, 16, 19 Jun, 01, 07, 22 Jul, 03, 06, 18, 30 Aug, 21 Sep, 05, 20, 26, 31 Oct, 05, 27 Nov, 07, 20, 24 Dec

*Price based on two people sharing, singles on request.

^Minimum 2 clients - Maximum 7.

INCLUSIONS

Accommodation on a twin share basis in lodges and tented camps, meals and activities as per itinerary, soft drinks and local drinks (except premium brands) whilst at Kulala Adventurer Camp, Damaraland Adventurer Camp and Ongava Tented Camp, transport by 4WD, park fees. Luggage limit: 20kgs.

No children under 12.

This exciting camping safari will take you to some of Namibia's most scenic regions: the soaring red dunes of Sossusvlei, the wildlife of Etosha, the deserts of Damaraland and the stunning Atlantic Coast. Accommodation is in comfortable dome tents featuring stretcher beds, linen, an ensuite shower and toilet. Activities include game drives, scenic walks and mountain biking. Group size is limited to 7 and trips are led by an experienced licensed guide.

Days 1/2 Sossusvlei

Depart by road to Kulala Adventurer Camp in Sossusvlei, stopping at the Naukluft Mountains en route. Enjoy exploring the Sossusvlei dunes, drives on the concession and stargazing. LD/BLD

Days 3/4 Swakopmund

Travel by road to the coastal town of Swakopmund, renowned for its marine mammals. Enjoy a private cruise (weather permitting) at Walvis Bay to view fur seals and dolphins. Overnight at the historic Hansa Hotel. BLD/B

Days 5/6 Damaraland

Continue via Cape Cross to Damaraland Adventurer Camp. Enjoy nature walks, mountain biking, viewing the rock engravings at Twyfelfontein, day and night game drives. BLD



Damaraland Adventure Camp © Wilderness Safaris

Days 7-9 Etosha

Drive to Ongava Tented Camp, on the Ongava Private Game Reserve which borders the wildlife-rich Etosha National Park. Enjoy game walks and drives on the property and vehicle-based gameviewing in the national park. BLD

Day 10 Safari ends Windhoek

Return to Windhoek by road where the safari ends. B



Sossusvlei dunes © Shutterstock